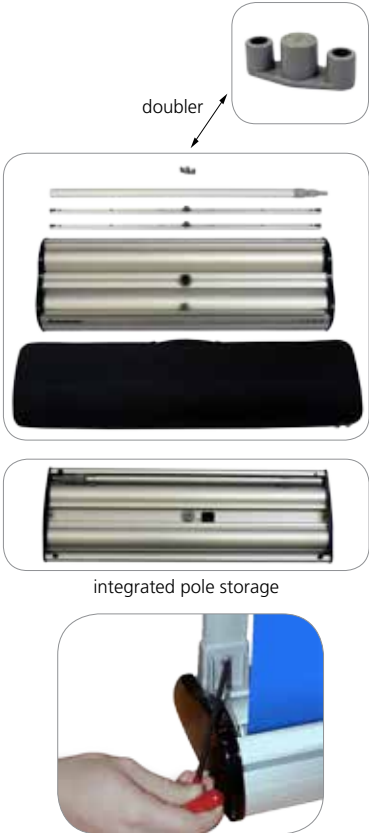


Advance

ADV-800-S

With refined styling and a streamlined profile, the Advance is packed with new design innovations. Useable as a single or double sided system, this removable cassette banner system has been specially designed for maximum convenience and ease of use.



Banner Stand Accessories:
easy connection with cam lock and channel

features and benefits:

- Variable height = 29.5" - 83.35"
- Telescopic pole with premium grip rail
- Integrated pole storage for the twist & lock telescopic pole
- Accessory channel featured on the top of the unit (to add a literature pocket or arm table accessory)
- Single or double sided
- Graphic tensioner
- Interchangeable graphic cassettes
- Add your own branding using the slide in graphic channel along the banner stand base
- Premium form molded EVA bag included
- Lifetime warranty against manufacturer defects

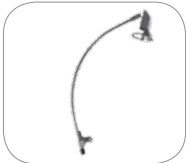
dimensions:

Hardware	Graphic
<p>Assembled unit: 87"(h) max x 34.25"(w) x 11.61"(d) approx. 2210mm(h) x 870mm(w) x 295mm(d) approx.</p> <p>Base dimensions: 3.75"(h) x 34.25"(w) x 11.61"(d) approx. 95mm(h) x 870mm(w) x 295mm(d) approx.</p> <p>Weight: 16.8 lbs / 7.66 kgs approx. (including carry bag) (Installed graphics will add weight)</p>	<p>Grippa top rail attachment recommended for semi-permanent or long term use. Adhesive top rail attachment recommended for short term use.</p> <p>WARNING: Always attach graphic to base and top rail before removing the locking pin. After fitting, the graphic should be left for 24 hours before use to ensure the adhesive bonds sufficiently. Opening the base will invalidate the product warranty.</p> <p>Graphic tension may be re-applied or added by turning the ratchet tensioner clockwise.</p>
<p>Shipping</p> <p>Shipping dimensions - ships in one box 37"l x 14"h x 5"d 920mm(l) x 350mm(h) x 115mm(d)</p> <p>Approximate shipping weight: 24 lbs / 10.89 kgs shipping weight with graphic 17 lbs / 7.66 kgs shipping weight without graphic</p>	

additional information:

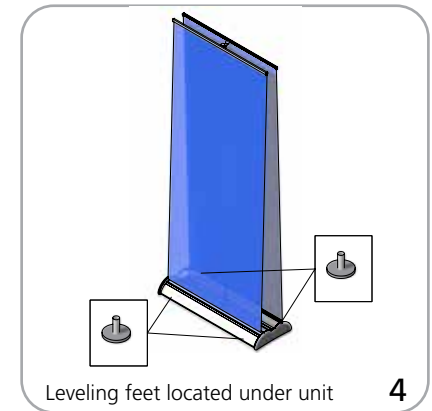
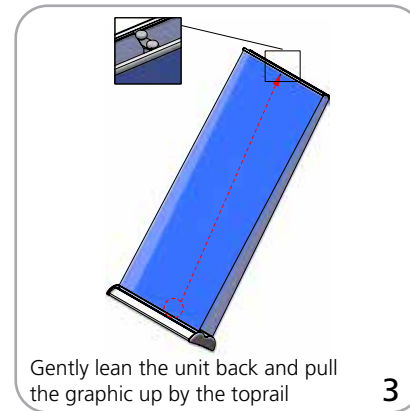
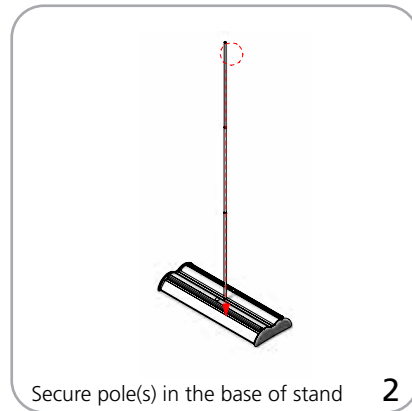
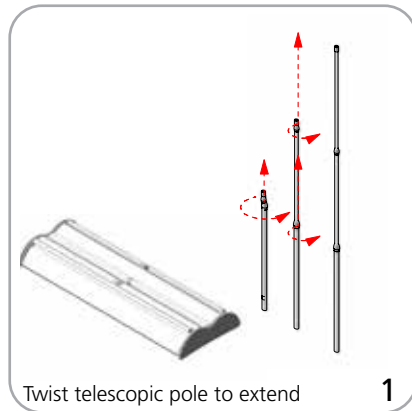
- Graphic materials:
14oz. anti-curl vinyl, Premium 100% opaque fabric, 11 mil melinex
- Stand-off rectangle counter top is available in black thermoform only.
- Stand-off literature rack is available (L112-2 only)

Lumina 2 banner lighting option available

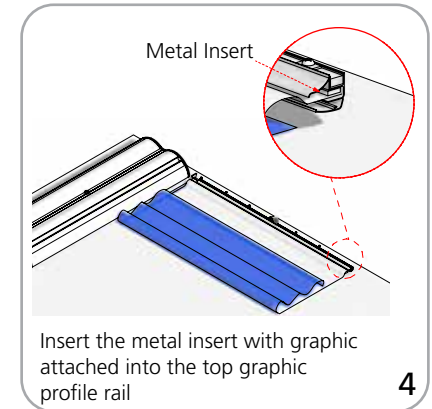
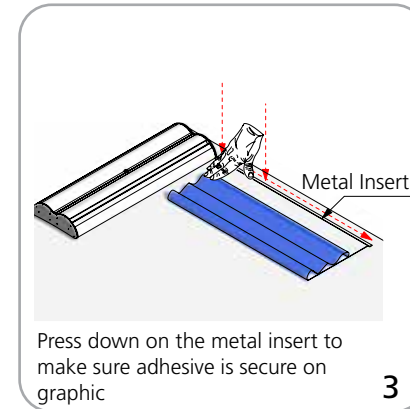
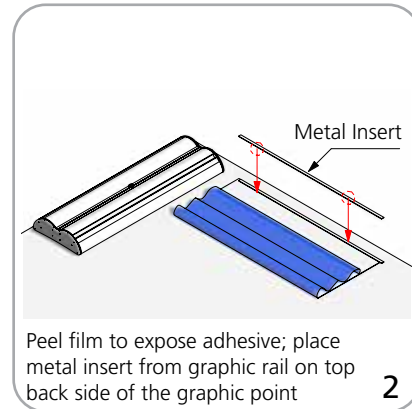
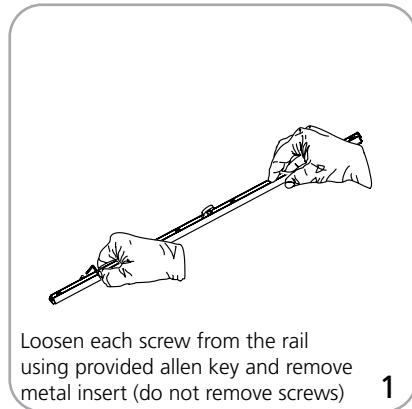


We are continually improving and modifying our product range and reserve the right to vary the specifications without prior notice. All dimensions and weights quoted are approximate and we accept no responsibility for variance. E&OE. See Graphic Templates for graphic bleed specifications.

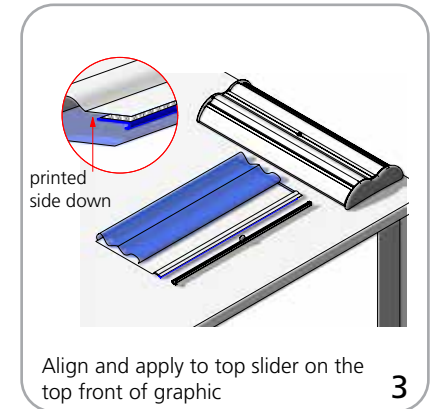
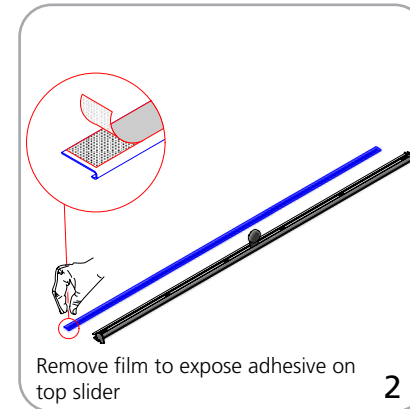
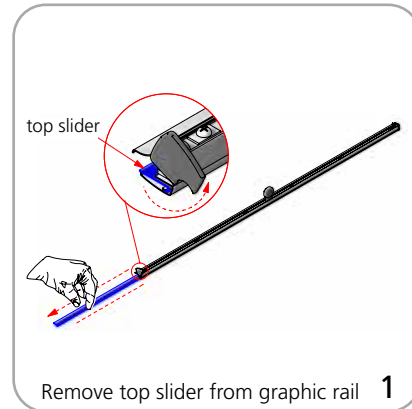
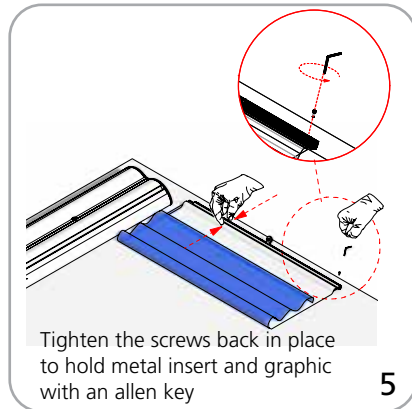
Set-up



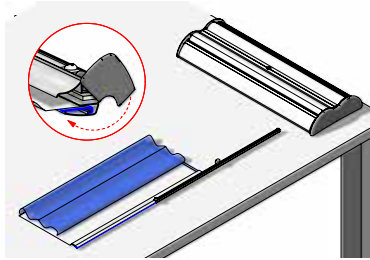
Graphic to top rail attachment (metal insert)



Quick slide top rail attachment (plastic insert)

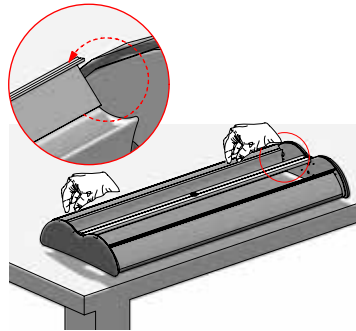


Graphic to base attachment



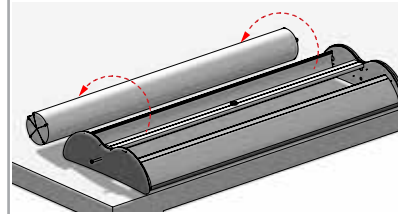
Insert graphic onto graphic rail

4



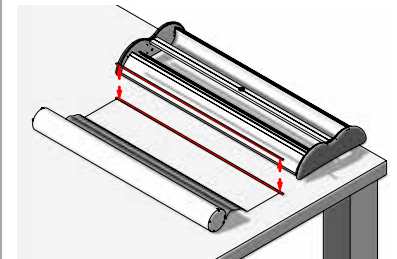
Flip open the cassette door

1



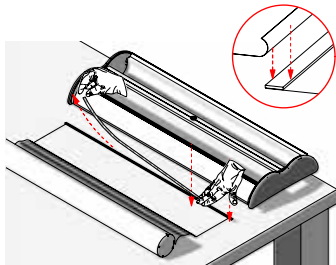
Carefully remove the cassette from the outer cartridge

2



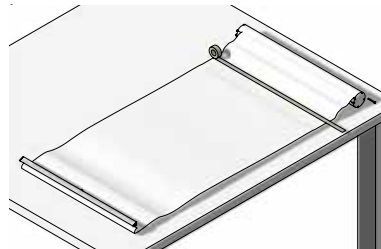
Line the bottom of the back of graphic print with adhesive tape on white leader strip

3



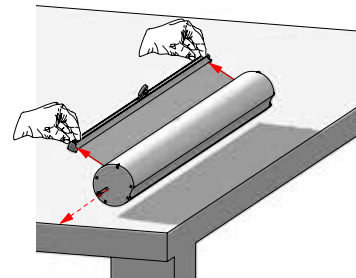
Once aligned pull adhesive tape slowly while applying pressure to graphic to adhere tape

4



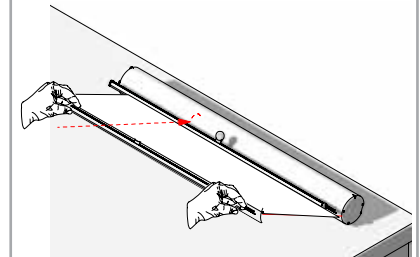
Place additional masking tape to the back of the graphic for extra protection

5



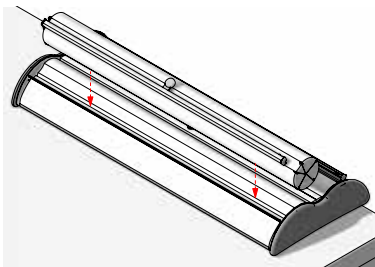
Remove pin while holding onto the graphic so the graphic does not retract back in quickly

6



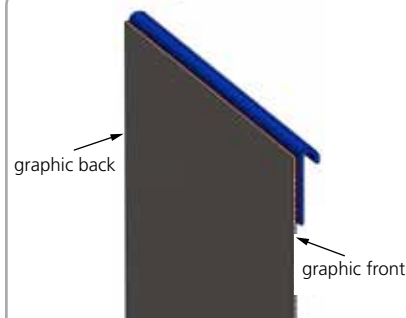
Slowly retract the graphic back into the base

7



Place interchangeable cartridge back into the outer cartridge with graphic retracted back in

8



top rail slider