

Start

STRT-800-C

The Start is a sleek and sturdy retractable, swivel foot banner stand. With its own carry bag, the Start is the perfect affordable on-the-go display solution.



features and benefits:

- Comes complete with base, snap top rail, three piece bungee pole and carry bag
- Swivel foot base for stability
- Chrome endcaps
- Anodized silver finish
- Carry bag included
- 90 day hardware warranty against manufacturer defects

dimensions:

Hardware

Graphic

Assembled unit:

32.75" w x 11.625" d x 83.125" h
832mm(w) x 295mm(d) x 2111mm(h)

Bag only weight: 5.56 lbs / 2.5 kgs

Refer to related graphic template for more information

Visit: www.exhibitors-handbook.com/graphic-templates

WARNING: Always attach graphic to base and top rail before removing the locking pin. After fitting, the graphic should be left for 24 hours before use to ensure the adhesive bonds sufficiently. Opening the base will invalidate the product warranty.

Shipping

Shipping dimensions - ships in one box:

35" l x 6" w x 5" h
889mm(l) x 152mm(w) x 127mm(h)

Approximate shipping weight:

Box: 8 lbs / 3.6 kgs (no graphics)

additional information:

Graphic materials:

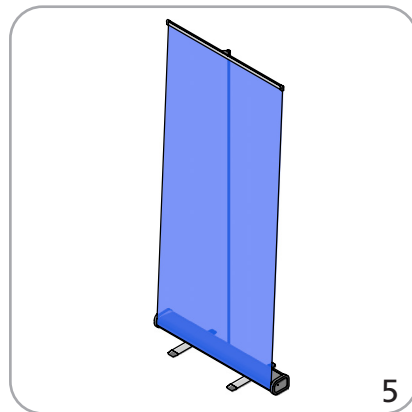
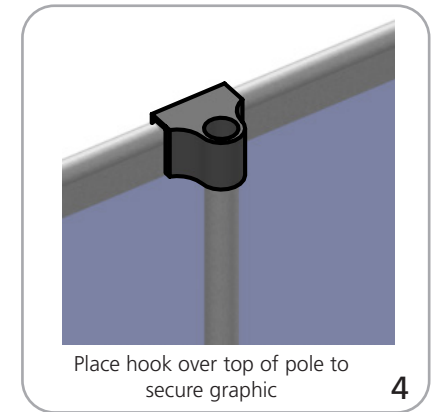
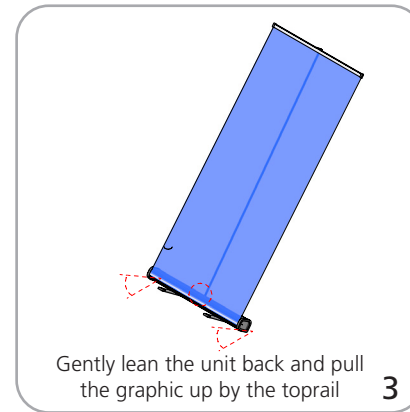
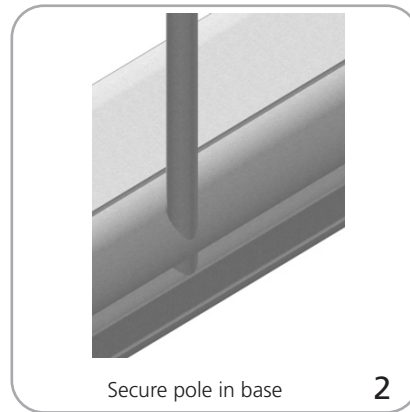
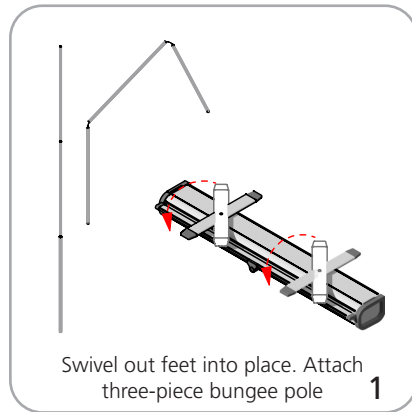
14 oz anti-curl vinyl, premium 100% opaque fabric, 11 mil melinex

Optional OCB hard shipping case fits two Start banner stands

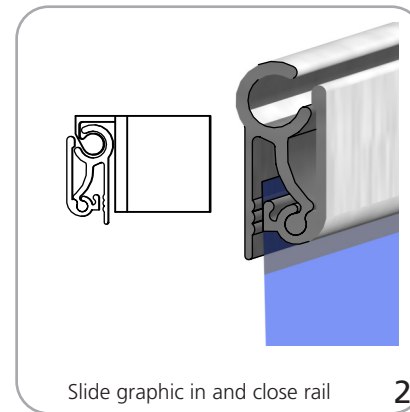
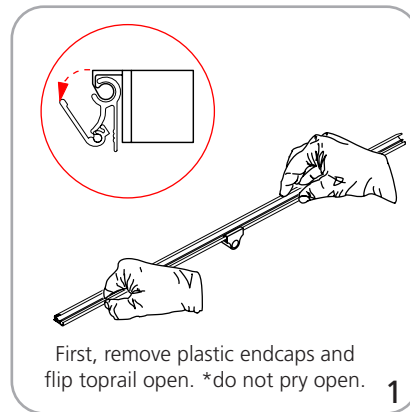
Lumina 2 banner lighting option available

We are continually improving and modifying our product range and reserve the right to vary the specifications without prior notice. All dimensions and weights quoted are approximate and we accept no responsibility for variance. E&OE. See Graphic Templates for graphic bleed specifications.

Set-Up



Top Rail



Bottom Graphic Attachment

