

Formulate Kiosk - 04

FMLT-KIOSK-04

Formulate® Kiosks with light weight aluminum tube frames with state-of-the-art printed stretch zipper pillowcase fabric graphics to create funky and functional multimedia kiosks.



We are continually improving and modifying our product range and reserve the right to vary the specifications without prior notice. All dimensions and weights quoted are approximate and we accept no responsibility for variance. E&OE. See Graphic Templates for graphic bleed specifications.

features and benefits:

- Premium aluminum tube frame with spigot assembly
- Easy to store and ship
- Quick to set up
- Pillowcase fabric graphic
- Kit includes: large monitor mount, can hold 40" - 65" monitor / max weight 40 lbs
- Lifetime limited hardware warranty against manufacturer defects
- Counter with cabinet door

dimensions:

Hardware

Assembled unit:
39.37" w x 92.52" h x 35.75" d
1000mm(w) x 2350mm(h) x 908mm(d)

Approximate weight:
193 lbs / 87.5kgs

Shipping

Packing case(s):
2 OCH2 Case

Shipping dimensions:
52" l x 30" w x 14" h
1321mm(l) x 762mm(w) x 335mm(h)

Approximate total shipping weight
(includes cases & graphics):
199 lbs / 90.3kgs

Graphic

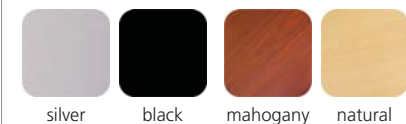
Refer to related graphic template for more information.

Visit:
www.exhibitors-handbook.com/graphic-templates

additional information:

Graphic material:
dye-sublimation zipper pillowcase fabric

Tabletop Colors



Included In Your Kit

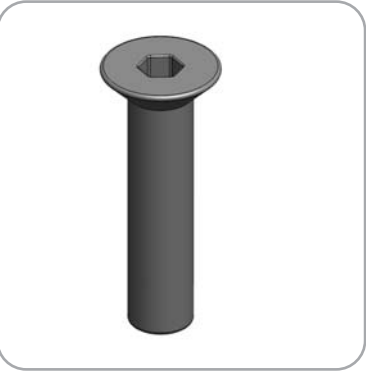
Tools, Components, & Connectors



ALLEN KEY SET x1



ES30 x20



LN114-SCRW x2



LN114-S2-650 x2



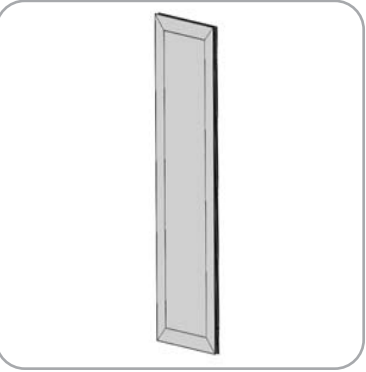
TUBE-LG-MB x1



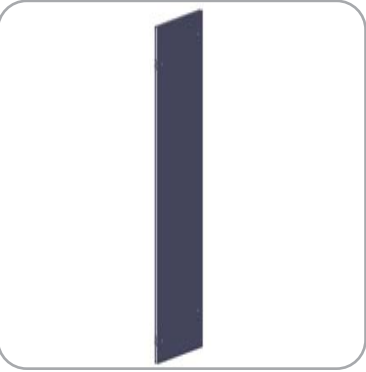
PNL-FMLT-KIOSK-04-L-1 x1



PNL-FMLT-KIOSK-04-R-1 x1



LP-300-1035 x1

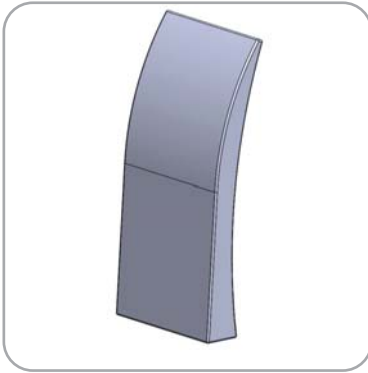


LP-CD-300-1000 x1



CT-FMLT-KIOSK-04-1 x1

Graphics

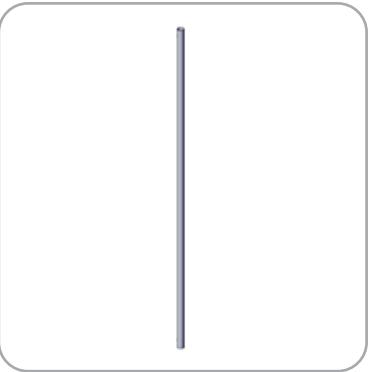


FMLT-KIOSK-04-G x1

Included In Your Kit



FMLT-KIOSK-04-T1 x1



FMLT-KIOSK-04-T2 x2



FMLT-KIOSK-04-T3 x2



FMLT-KIOSK-04-T4 x1



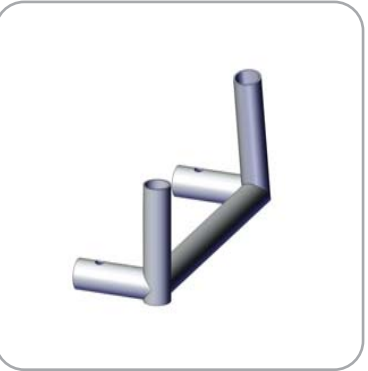
FMLT-KIOSK-04-T5 x1



FMLT-KIOSK-04-T6 x1



FMLT-KIOSK-04-T7 x4

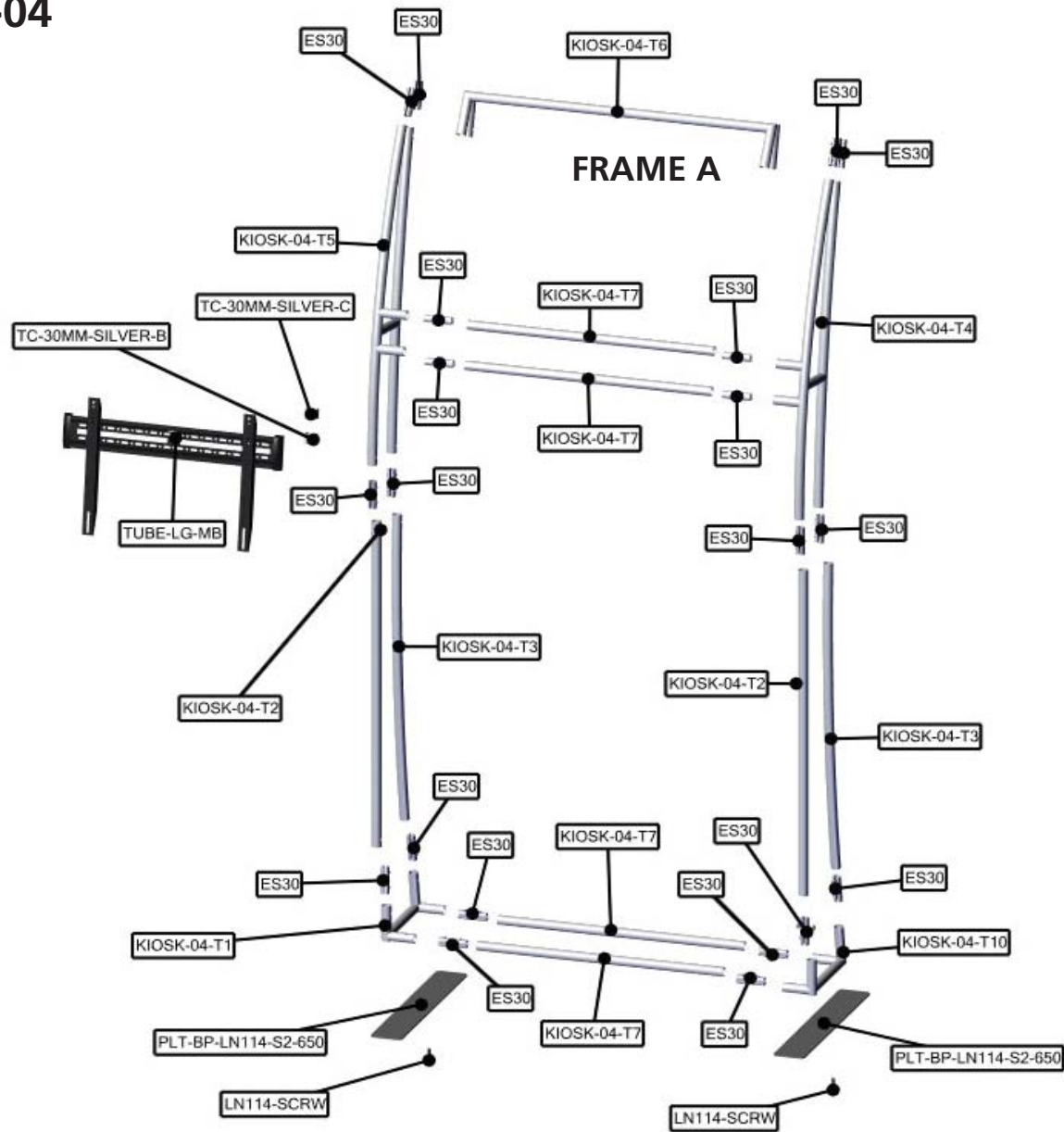


FMLT-KIOSK-04-T10 x1

Tubes

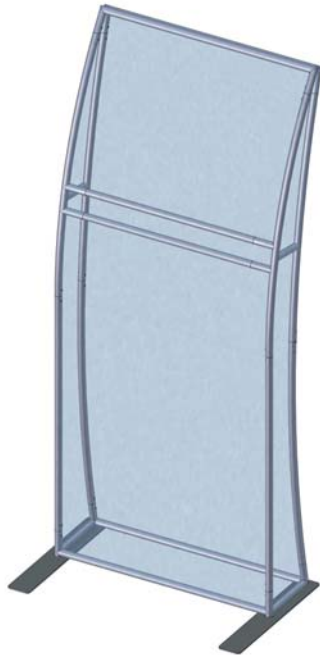
Exploded View

FMLT-KIOSK-04

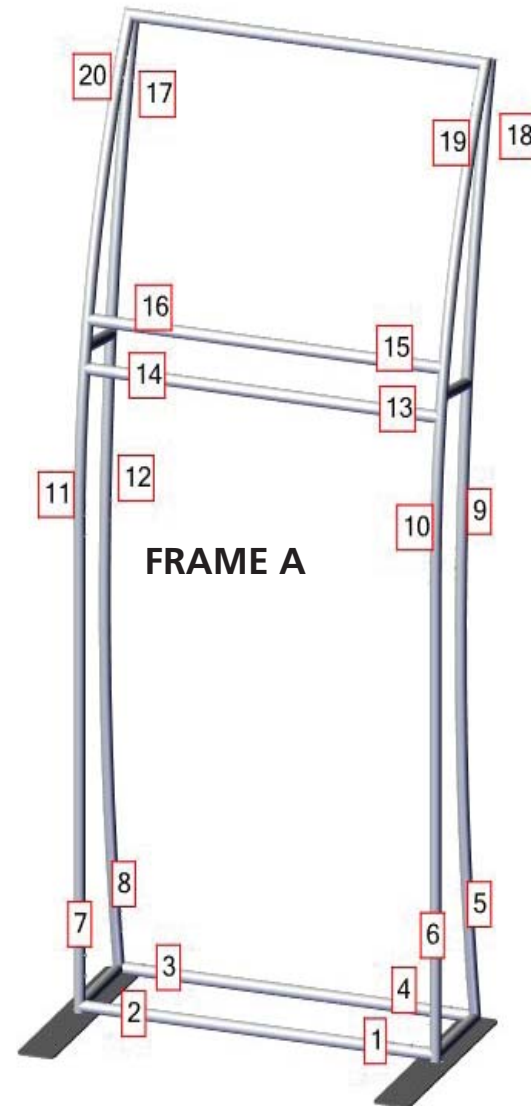
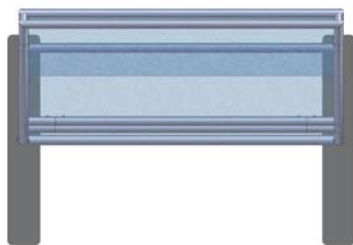


Labeling Diagram

FMLT-KIOSK-04



OVERVIEW



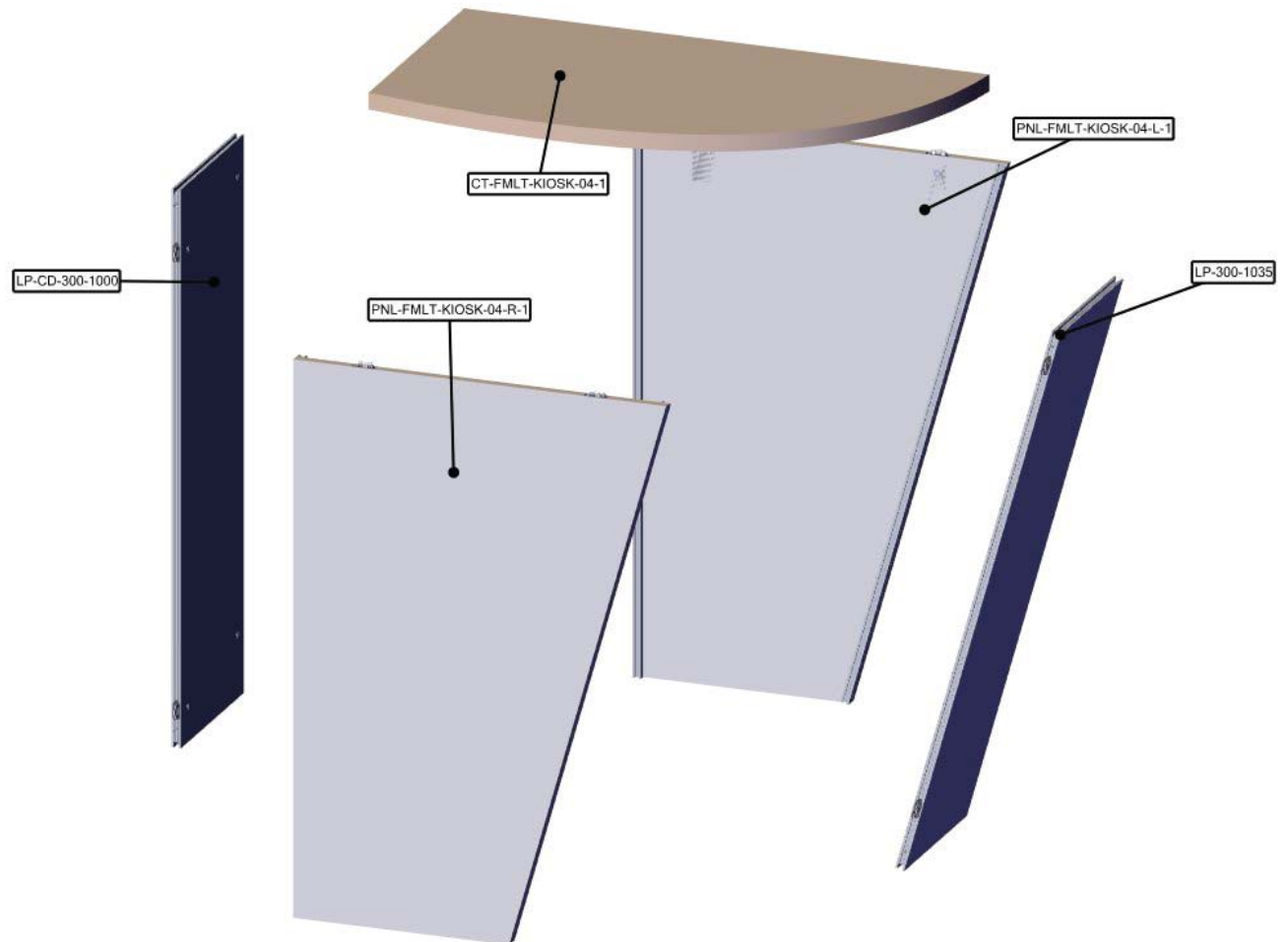
Exploded View

FMLT-KIOSK-04

Cabinet



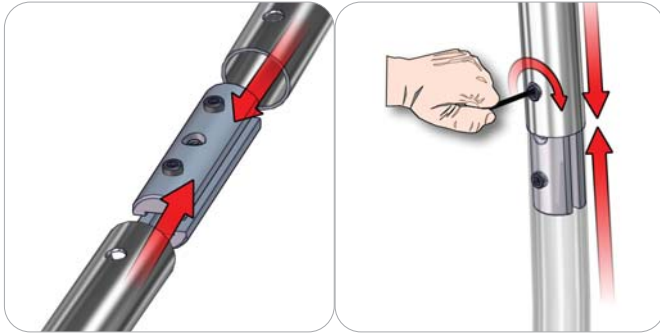
OVERVIEW



Connection Methods

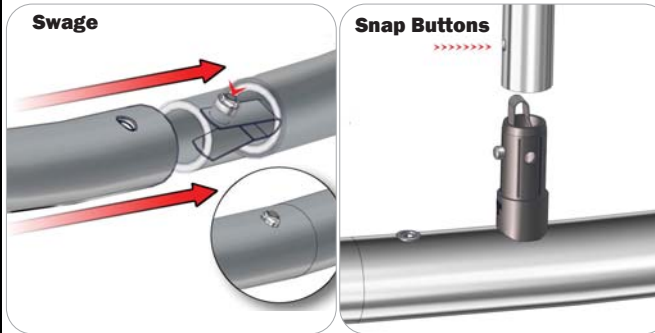
Formulate® structures use a number of different yet simple connection methods. Your kit will include one or more of the connection methods shown below. Steps within the Kit Assembly will reference a specific method for each connection point.

Connection Method 1: ES30 / ES50 / ES75



Compress the unlocked connector and slide one tube onto each end. Lock both screws carefully using your allen key tool. Be sure to lock securely, but do not overtighten.

Connection Method 2: Snap Buttons & Swage



Locate the snap button on the connector or swage tube. Locate the hole on the corresponding tube. Press the snap button with your thumb and slide the tube and connector together so that the snap button snaps fully into the lock hole. To disassemble, press the snap button and pull apart.

Connection Method 3: ES30-90B / ES30-I / ES30-C



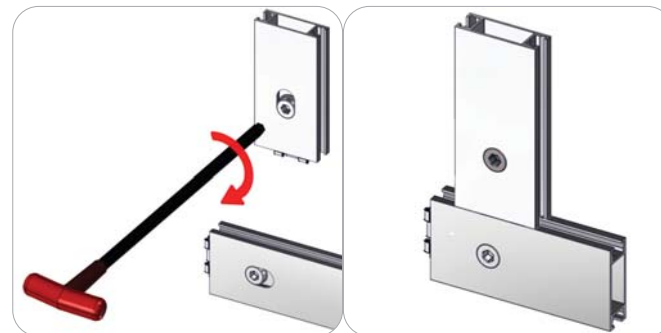
Compress one unlocked end of the connector and slide it through one tube end. Compress the other end of the connector and slide the second tube on. Lock both screws carefully using your allen key tool. Be sure to lock securely, but do not overtighten.

Connection Method 4: Tube Clamps



Be sure to fully assemble all frames before using clamps. With the clamp unlocked, place one tube of the first frame into the mouth of the clamp. Place the second tube (if applicable) into the second mouth of the clamp. With both frame's tubes in the clamp, be sure to lock securely, but do not overtighten.

Connection Method 5: Cam Lock



A cam lock equipped extrusion can lock to any cam lock channel. With the cam lock unlocked, set the teeth of the cam lock into the desired position on the cam lock channel. Using your allen key tool, carefully turn the lock clockwise to lock in place. Be sure to lock securely, but do not overtighten.

Kit Assembly

Step by Step

Step 1.

Gather the components necessary for assembling Frame A and lay them flat on the floor. Assemble in the order the Labeling Diagram instructs.

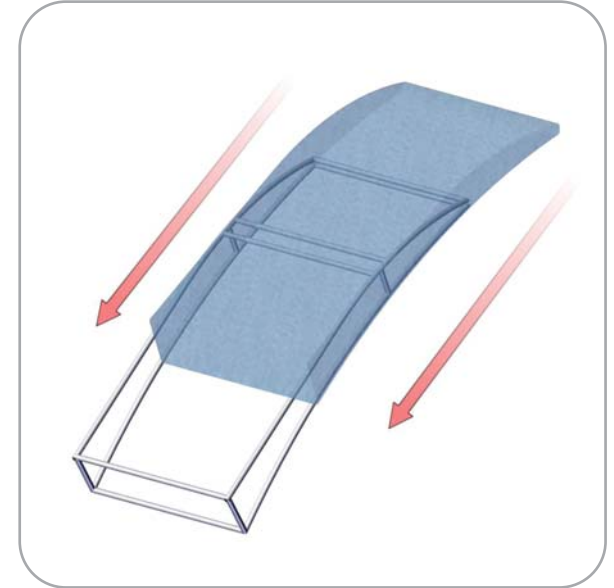
Please reference Connection Methods 1 for more details.



Step 2.

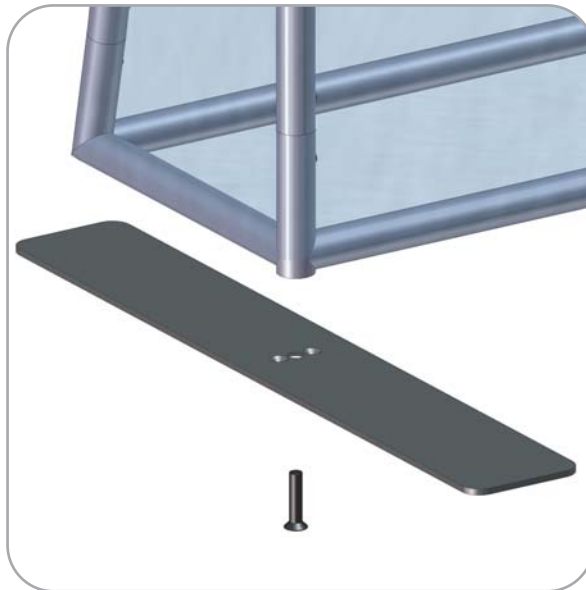
With Frame A laying flat on the floor, locate your pillowcase graphic. With the pillowcase unzipped, encase Frame A by covering the frame from top to bottom.

Zipper located on the bottom of Graphic.



Step 3.

Gather the LN114-S2-650's, and LN114-sSCRW's. Attach the base to left and right side of Frame A by screwing the screw through the base and as shown in the image to the right.



Step 4.

Gather your TUBE-LG-MB monitor mount and the (4) TC-30's. Attach your TC-30's to the TUBE-LG-MB and attach the clamps to Frame A.

Please reference Connection Method 4 or monitor connections methods sheet for more details.



Kit Assembly

Step by Step

Step 5.

Lay PNL-FMLT-KIOSK-4-L-1 on the floor. Attach door panel, LP-CD-300-1000, as shown.

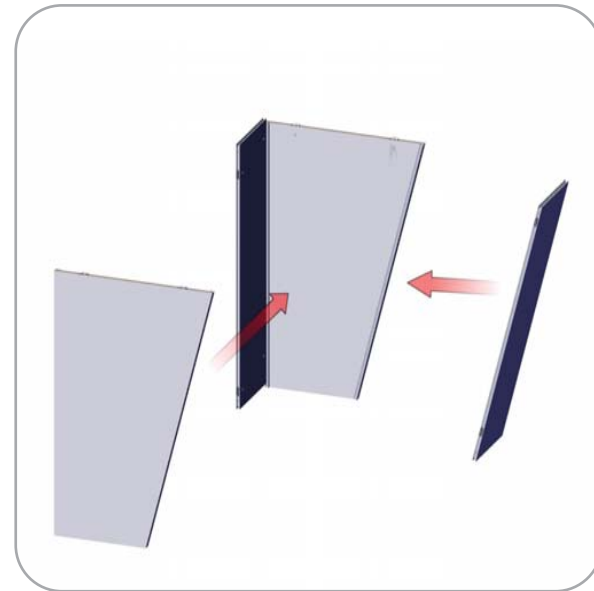
Please reference Connection Method 5 for more details.



Step 6.

Attach both remaining panels as shown.

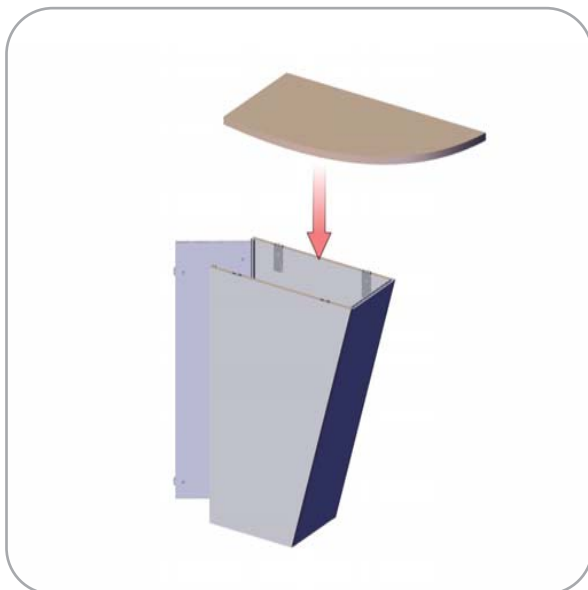
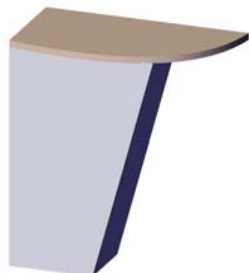
Please reference Connection Method 5 for more details.



Step 7.

Attach countertop as shown. This can be accomplished by opening the door panel to access the appropriate connection mechanisms.

Please reference Connection Method 5 for more details.



Step 8.

Align frame A with countertop.

Assembly is complete.

